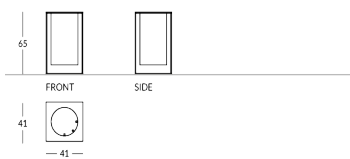


FRIEDA-OMB

Portaombrelli di design in metallo della collezione Frieda: perimetro quadrato e ampio scomparto cilindrico centrale. Finiture disponibili: - metallica: effetto ottone, acciaio o rame - verniciatura nei colori Apir o in una qualsiasi tonalità della scala RAL Piedini protettivi sul fondo. Altezza: 65 cm Lato base quadrata: 41 cm Peso: 10,75 kg



Versione



Standard

Finiture metalliche | Metal finishes | Finitions métalliques



OTIND
Ottone
industriale



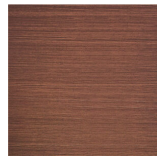
OTBRC
Ottone
bronzato
chiaro opaco



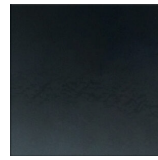
OTBRS
Ottone
bronzato
scuro opaco



OTANS
Ottone antico
nero opaco



RAANT Rame
satinato
anticato
opaco

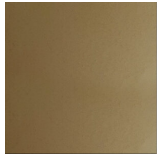


ACIND
Acciaio
industriale

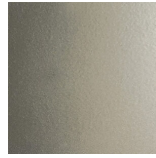
Finiture verniciate | Painted finishes | Finitions peintes



Oro



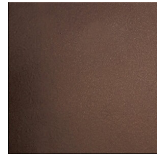
Oro antico



Anticato
chiaro



Tortora (RAL
1019)



Bronzo



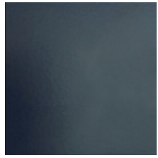
Simil corten



Argento



Canna di
fucile



Grigio scuro
(RAL 7016)



Nero opaco
(RAL 9005)



Nero lucido
(RAL 9005)



Bianco opaco
(RAL 9010)



Bianco lucido
(RAL 9010)



RAL