

## CHERY-TAP

Posacenere da tavolo con copertura antivento in vero ottone. Coperchio antivento rimovibile per facilitare la pulizia. Forma rotonda. Finiture disponibili: - metallica - verniciatura nei colori Apir o in una qualsiasi tonalità della scala RAL Diametro base: 9 cm Altezza: 4 cm

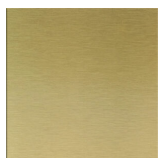


### Versione



Standard

## Finiture metalliche | Metal finishes | Finitions métalliques



OTSAT  
Ottone  
satinato  
lucido

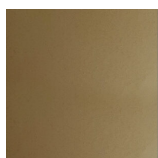


OTBRC  
Ottone  
bronzato  
chiaro opaco

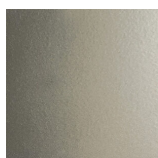
## Finiture verniciate | Painted finishes | Finitions peintes



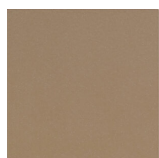
Oro



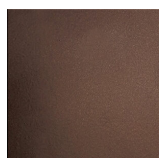
Oro antico



Anticato  
chiaro



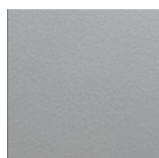
Tortora (RAL  
1019)



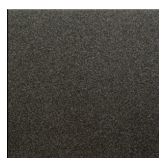
Bronzo



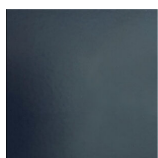
Simil corten



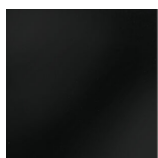
Argento



Canna di  
fucile



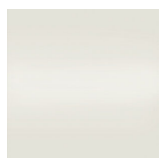
Grigio scuro  
(RAL 7016)



Nero opaco  
(RAL 9005)



Nero lucido  
(RAL 9005)



Bianco opaco  
(RAL 9010)



Bianco lucido  
(RAL 9010)



RAL