

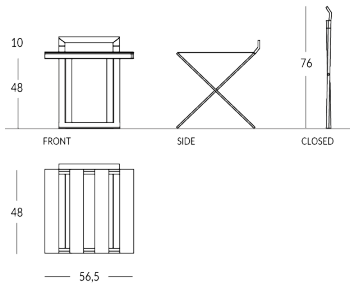


SUITTY/S

Reggivaligia pieghevole personalizzabile con sponda salvamuro. Materiale struttura: metallo con profilo piatto. Materiale cinghie: tessuto High-Tech o cuoio disponibili in diverse colorazioni. Finitura struttura: metallica (acciaio, ottone o rame) oppure verniciata nei colori APIR o in qualsiasi colore della scala RAL. Piedini in gomma opzionali. Struttura pieghevole per minimizzare l'ingombro. Altezza con sponda: 58 cm Altezza chiuso: 76 cm Larghezza: 56,5 cm Profondità aperto: 48 cm Peso: 4,85 kg



Versione



SUITTY/S-SML

Finiture metalliche | Metal finishes | Finitions métalliques



OTLUC
Ottone lucido



OTSAT
Ottone satinato lucido



OTIND
Ottone industriale



OTBRC
Ottone bronzato chiaro opaco



OTBRS
Ottone bronzato scuro opaco



OTANS
Ottone antico nero opaco



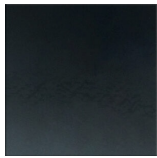
RAANT Rame satinato anticato opaco



ACLUC
Acciaio lucido



ACSAT
Acciaio satinato opaco

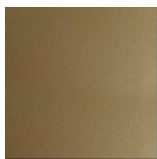


ACIND
Acciaio industriale

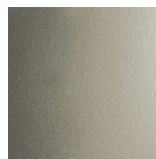
Finiture verniciate | Painted finishes | Finitions peintes



Oro



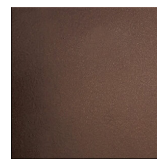
Oro antico



Anticato chiaro



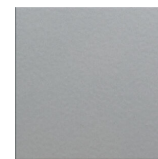
Tortora (RAL 1019)



Bronzo



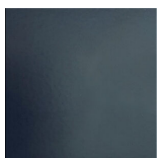
Simil corten



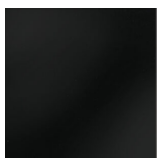
Argento



Canna di fucile



Grigio scuro (RAL 7016)



Nero opaco (RAL 9005)



Nero lucido (RAL 9005)



Bianco opaco (RAL 9010)

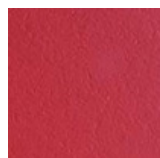


Bianco lucido (RAL 9010)

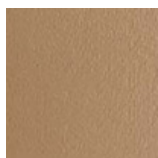


RAL

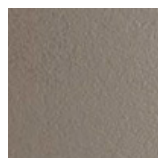
Colore cinghie cuoio | Strap colour | Couleur de courroies



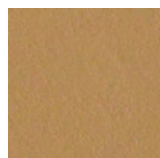
Rosso



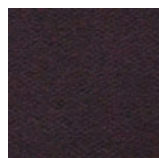
Talpa



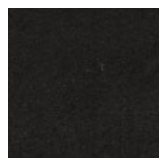
Fango



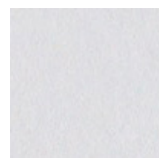
Cuoio



Testa di moro



Nero

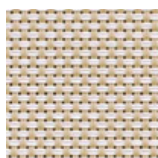


Bianco

Colore cinghie High-Tech



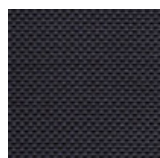
High-Tech
Grey



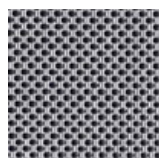
High-Tech
Sand



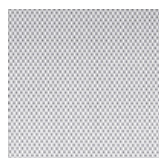
High-Tech
Safari



High-Tech
Deep Black



High-Tech
Hypnotic Grey



High-Tech
Glace