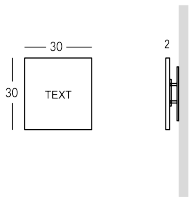


## PLANET

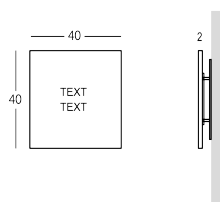
Targa per esterni realizzata in plexiglass con incisione del testo sul retro. Retroverniciatura della targa e del testo disponibile in qualsiasi colore della scala RAL. Testo inciso sul retro, superficie anteriore della targa liscia. Fissaggio a parete con viti. Testi e dimensioni personalizzabili. Possibilità di scegliere il font.



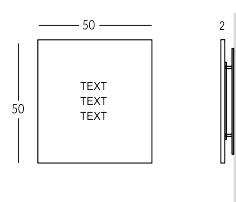
## Versione



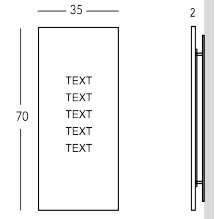
PLANET-XS



PLANET-SML



PLANET-MED

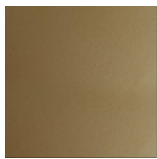


PLANET-BIG

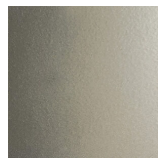
## Finiture verniciate | Painted finishes | Finitions peintes



Oro



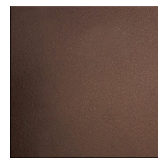
Oro antico



Anticato  
chiaro



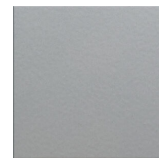
Tortora (RAL  
1019)



Bronzo



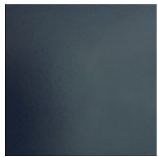
Simil corten



Argento



Canna di  
fucile



Grigio scuro  
(RAL 7016)



Nero opaco  
(RAL 9005)



Nero lucido  
(RAL 9005)



Bianco opaco  
(RAL 9010)



Bianco lucido  
(RAL 9010)



RAL