

TANKA

Segnaletica per esterni composta da tubolari in metallo a profilo geometrico e assi in legno iroko 2cm. Possibilità di personalizzare i tubolari con verniciatura in un qualsiasi colore della scala RAL e lettering in vinile. Assi in legno incise con laser, testi di colore neutro. Dimensioni e font personalizzabili in base alle esigenze. Segnaletica disponibile a bandiera oppure con due pali di supporto, interrati o fissati con viti.

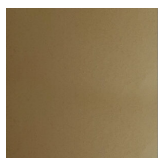


Versione

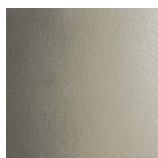
Finiture verniciate



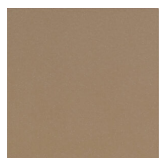
Oro



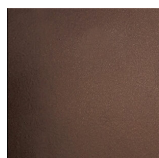
Oro antico



Anticato
chiaro



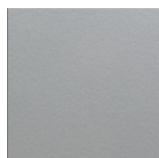
Tortora (RAL
1019)



Bronzo



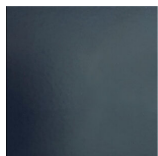
Simil corten



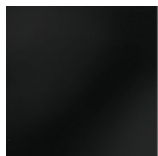
Argento



Canna di
fucile



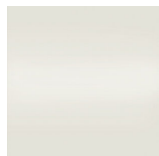
Grigio scuro
(RAL 7016)



Nero opaco
(RAL 9005)



Nero lucido
(RAL 9005)



Bianco opaco
(RAL 9010)



Bianco lucido
(RAL 9010)



RAL